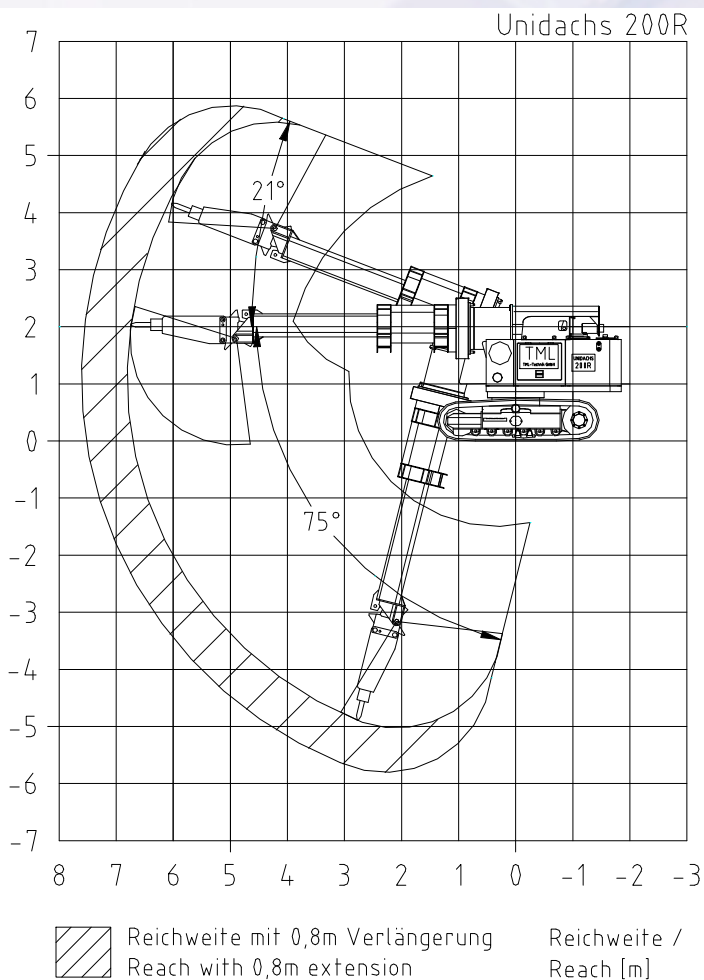
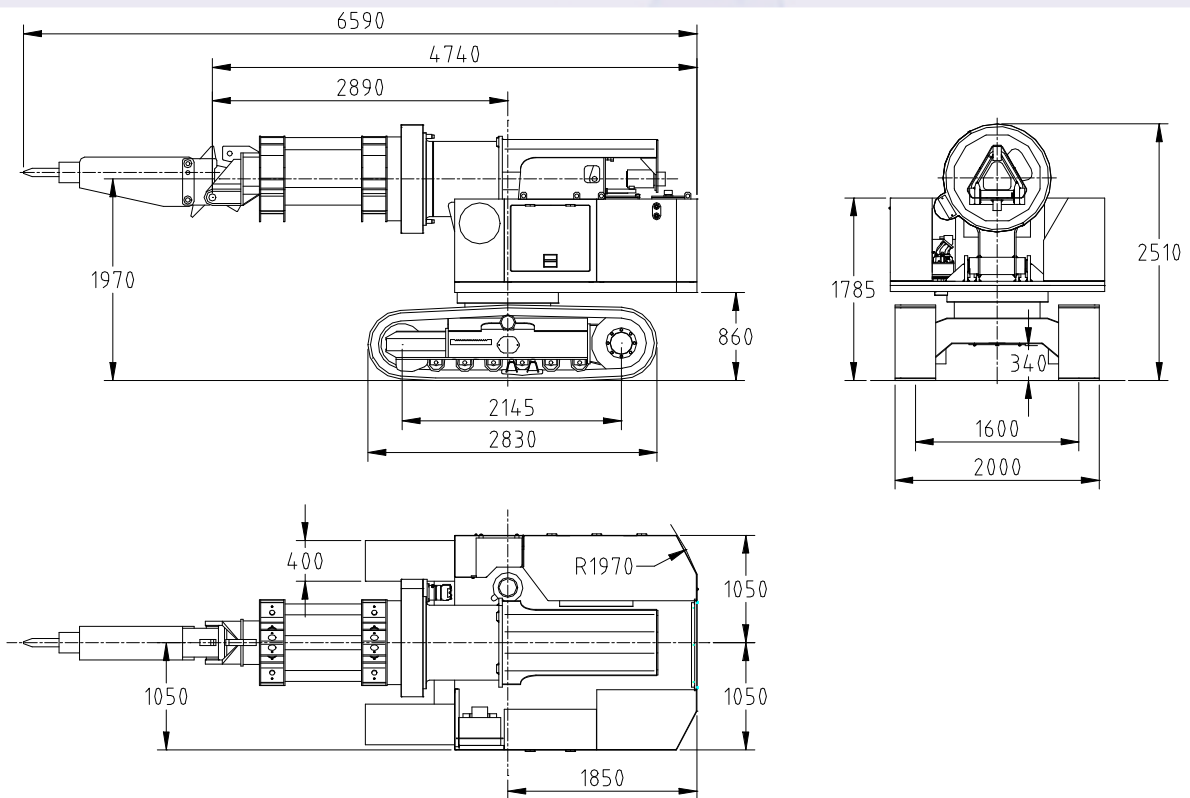




TML Technik GmbH
Engineering, Technik und Mehr

UNIDACHS 200R



TML Technik GmbH
Engineering, Technik und Mehr

Tel. +49-(0)2173-95750 · Fax +49-(0)2173-957540
www.tml-technik.com · info@tml-technik.com



UNIDACHS 200R

- UNDERCARRIAGE** The planetary drive units and crawlers are built well inside the chassis frame to protect them against damage. Life time lubricated and sealed support and track rollers. Tractor type crawler mounted, centre idler to centre drive sprocket = 2.145 mm / track width = 1.600 mm with sealed grease lubricated track chain, size B2, with 400 mm triple grouser heavy duty shoe pads.
- SUPERSTRUCTURE** Hand rails for safe access to the machine upper structure, and for refuelling. All access openings and flaps are lockable (protection against theft and vandalism).
- CRADLE / BOOM** Cradle with 2 boom cylinders. Telescopic boom with telescoping cylinder and tool cylinder. Infinitely adjustable boom guide rollers. Internally protected hydraulic hoses.
- Engine** Diesel Engine, Rated power according to DIN 3046/1 Group 2 IFN 50 kW at 2300 rpm. Fuel consumption appr. 225g/kWh.
- OPTIONS** 500 mm track pads, wider chassis, heating system for hydraulic oil tank fuel tank and engine compartment, additional working headlights, combination air filter with cyclone pre-cleaner, Electro motor drive, remote control, automatic lubrication system (depending upon attachments), additional counter weight, lockable tool box, fire extinguisher with bracket, emergency program for superstructure slew system and crawler drive system (accumulator), stop button on the rear of the machine, tap hole drilling attachments, gunning lance equipment, single point lifting hooks, ripper hooks, dipper buckets, ripper extensions, additional hose trough with internally protected hoses for hydraulic or pneumatic attachment, pneumatic hammers, rotary drum cutters, boom extensions, and further special custom made tool attachments as per customer specifications.

FORCES

Boom rotation torque	13 kNm
max. ripping force at tool tip	62 kN
Pulling force of boom	40 kN
Pushing force of boom	40 kN
Travel speed	4,0 km/h
Gradability	55 %
Weight	9,4 – 11,4 T
Ground pressure	5,5 - 6,7 N/cm ²

BOOM

Rotation	360° (?)
Total arc	96° (+21°, -75°)
Tool pivot	115°
Swing of superstructure	360° (?)
Stroke	2000mm
Reach without extension up to tip of ripper hook	6710mm
Reach with 0,8m extension	7510mm
Lift capacity (*) along tracks ? 10°	
...Boom retracted	40 kN
...Boom extended	15 kN
Lift capacity (*) across tracks	
...Boom retracted	20 kN
...Boom extended	7 kN

HYDRAULICS

Number of pumps	3
Total delivery	240 L/min
operating pressure	250 bar
control pressure	30 bar

ELECTRICAL EQUIPMENT

3 phase alternator	28V 40A
Batteries	2x12V 88Ah
Starter	24V 4kW

RESERVOIRS

Fuel	160 Liter
Hydraulic oil	300 Liter

(*) Lift capacity measured on tool axis without, attachment, counterweight may be required

