

TECHNICAL DATA



Operation weight: approx. 17.000 kg
Diesel drive with 91 kW
or alternatively
Electro drive with 75 kW
Telescopic stroke: 3.000 mm

Undercarriage

Sturdy box type welded for metallurgical industry / steel mill application design with maintenance free crawler chain B2.

Centre drive sprocket – centre idler _____ 2.717 mm
Track width _____ 2.500 mm
Base plates _____ triple grouser, HD, 500 mm

Track drive

Hydrostatic track drives with axial piston motors and planetary gear drives, fully protected inside the chassis frame, brake valve for down hill travel.

Travel speed _____ 2,6 km/h
Gradability _____ 55 %
Draw bar pull _____ 100 kN
Brakes _____ spring set, hydraulically released wet disc type wedging brake

Steering

Independent controls for each crawler track, turning on the spot, through double hydraulic circuit, precise operation through foot pedals.

Superstructure

Sturdy heavy duty welded structure upon which the hydraulic tank, the fuel tank, the hydraulic valve cabinet, the engine with hydraulic pumps, the hydraulic oil cooler and the operators cabin are logically and neatly set up. Safety steps and hand rails for safe access to the operator's cabin, handrails and steps for safe access to the machine superstructure and for re-fuelling. All access openings, flaps and doors are lockable.

Slew drive

Hydrostatic track drives with axial piston motors and planetary gear, pinion driven large dimensioned slew gear with external teeth.

Slew motion _____ 360°, continuously
Slewing speed _____ 0 – 6 rpm
Slew brake _____ spring set, hydraulically released wet disc type wedging brake

Operator's cabin

The spacious, noise protected operator's cab, built to the latest ergonomical requirements, especially designed for use in the hot applications with steel inner facia panels and consoles (not plastic), offers additional stowing space behind the individually adjustable comfortable seat. The low sound level and a powerful ventilation system with a slight pressure in the cab provide a pleasant working place. Safety glass windows, sliding window in the cab door, front screen protection by a grating and fine wire mesh to prevent the radiation of heat, pelvic restraint, cabin heater through air jets, air conditioning, first aid kit with bracket, rear view mirror left, safety steps and hand rails are counted among the cabin equipment. All controls are set up logically and assure a safe operation of the machine.

Surround noise level LWA _____ 102 db (A)
Inside cab noise level LpA _____ 75 db (A)

Cradle / Telescopic boom

The telescopic boom is built of high tensile, wear and temperature resistant steel and is of triangular section consisting of the outer boom (main boom) and the inner boom. The telescopic boom is designed and manufactured specifically for the tough and high temperature applications in the steel plants. The boom is completely closed off to protect the parts inside the boom i.e. hydraulic cylinders and hoses etc. against the radiation of heat and any falling objects. The telescopic motion of 3.000 mm is actuated by a hydraulic cylinder being able to achieve approx. 125 kN of push and pull force. At the front end the tools are attached by means of a large dimensioned solid tool axle and are actuated by a hydraulic cylinder, the total arc is 115°, +8° / -107°.

Due to technical development, modifications are reserved without notice!



The telescopic boom is guided by 12 eccentrically adjustable guide rollers that are easily accessible from the outside to assure a 100% concentric rotation of boom i.e. during the drilling operation of converter tap holes.

The telescopic boom is fitted to the superstructure by means of a cradle that is actuated by means of 2 hydraulic cylinders for the boom working angle. The telescopic boom rotates 360° continuously within the cradle by means of 2 hydrostatic orbital drives fitted with a brake and a large dimensioned slew gear with external teeth.

Telescopic stroke	3.000 mm
Boom rotation	360°, continuously
Boom rotation speed	10 rpm
Boom rotation torque	13 kNm (26 kNm)
Total boom arc angle	107°, +30° / -77°
Total working angle	115°, +8° / -107°
Tool ripping force	85 kN

Diesel drive

Diesel engine	
Make	DEUTZ AG
Model	4 Cylinder, Diesel engine TCD 2012 L04 2V, COM III
Rated power	91 kW DIN 3046/1 Group 2 IFN at 2.300 rpm
Engine capacity	4.037 cm ³
Torque, at 1.500 rpm	472 Nm
Cooling	Fluid
Air filter	2-stage, with electrical contamination indicator
Fuel tank capacity	220 Liter

Electro drive 3-Phase (alternative)

Electro engine	
Voltage (depending upon net work)	380 V / 400 V / 500 V
Frequency (depending upon net work)	50 Hz / 60 Hz
Rated power	75 kW at 1.500 rpm

Electrical system

System voltage	24 V
Alternator (*)	28 V, 25 A
Battery (*)	2 x 12 V, 80 Ah
Starter (*)	24 V, 4 kW

(*):not applicable with electro motor

Lighting

Superstructure	2 x Working headlights 100 W
Main boom	1 x Working headlight 100 W
Safety beacon	1 x Yellow

Hydraulic system

The hydraulic system (Bosch Rexroth) is a LOAD-SENSING system with a high capacity oil tank fabricated of mild steel that is set up with a fine grade pressure less return filter, the outlet suction line to the pumps is connected to the hydraulic oil tank with a shut off valve. The main pump is a performance regulated variable axial piston pump, driven by a flexible coupling. The 2 auxiliary gear pumps for the pilot system and the hydraulic oil cooler drive are driven directly by the drive motor. The control valve cabinet is a separate unit fitted on the superstructure which contains the main control valve blocks for the working functions, the cabinet is neatly set up allowing a good access to all components and the mini mess connections to carry out pressure checks. The hydraulic pilot system installed according to the European control standards with safety pilot valve circuit breaker on the left side of the operator's seat. All of the hydraulic functions are proportional allowing a very precise working of the machine.

Due to technical development, modifications are reserved without notice!



The grade of hydraulic oil used is HLP46 (HLP68 optional for hot or HLP32 for cold regions), that is cooled in a separate high capacity hydraulic oil cooler upon returning to the tank.

The boom lift cylinders are fitted with a pipe-break protection system to prevent the unwanted dropping of the boom during pressure loss e.g. hose or pipe breakage.

Operating pressure _____ 300 bar
 Total delivery _____ 240 L/min
 Pilot pressure _____ 30 bar
 Hydraulic oil tank capacity _____ 340 Liter

Paint

Superstructure and telescopic boom _____ Yellow, RAL 1007
 Undercarriage _____ Black, RAL 9005

Safety equipment

Heat resistant safety glass all round, strong steel protective grating in front of windscreen, fine wire mesh in front of windscreen to protect against heat radiation, pelvic restraint, safety lever as circuit breaker for the pilot controls in the cabin, pipe-break protection system on the boom lift cylinders, 3 fully adjustable heat resistant headlights to illuminate the working area, 1 yellow safety beacon on the rear of the machine, signal horn, acoustic warning signal whilst driving the tracks, hydraulically actuated wet disc type wedging brake on the rotary drives, first aid kit, fire extinguisher on board and glass breaker hammer in the cabin.

Lift capacity

Max. lifting capacity*	Boom retracted	Boom half extended	Boom fully extended
	4,6 m**	6,1 m	7,6 m
Along the tracks	4.100 kg	2.600 kg	1.800 kg
Across the tracks	3.100 kg	2.000 kg	1.300 kg

(*): The lifting capacity indicated is based on a machine with standard counterweight without an attachment or any other additional equipment fitted. Through use of heavier counterweights the nominal lifting capacity can be raised. Additional attachments/extensions fitted will reduce the nominal lifting capacity.

(**): The lifting capacity indicated is at the tool axle, the distance indicated from the centre of slew.

Tools and attachments

Single ripper hook, double ripper hook, converter tap hole drill, porous plug pusher, ripper extensions, various sized buckets, ripper bucket, boom extension, pneumatic hammer, hydraulic hammer, rotary drum cutter, mechanical quick coupler, single point lifting hook as well as customer defined special tools.

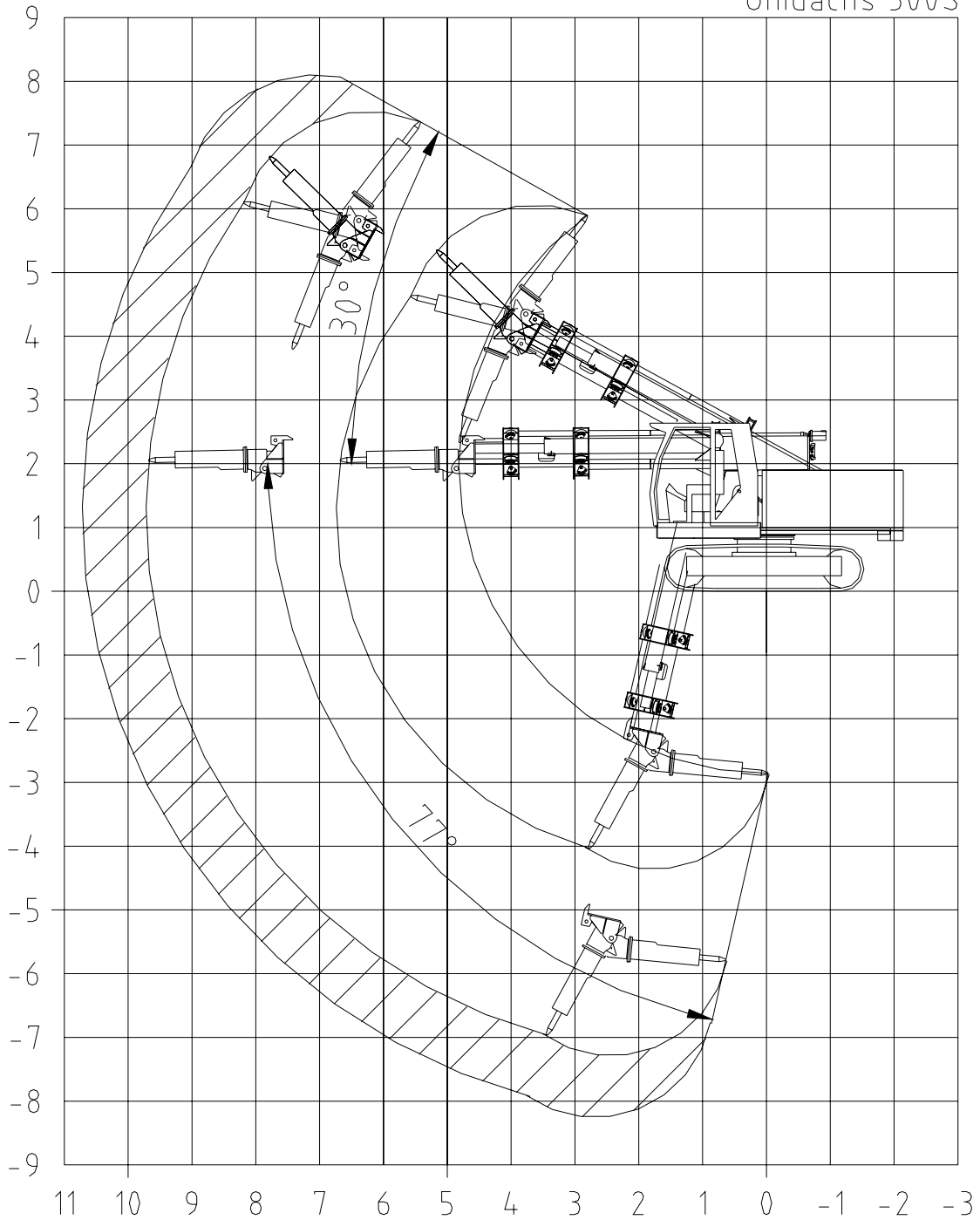
Options

600 mm base plates, quick change pads for base plates, wider undercarriages, stationary heater, "Arctic pack" (hydraulic oil, engine compartment and fuel tank pre-heating system), additional working headlights, fans in the cabin, combination air filter with cyclone pre-cleaner, radio and cable remote controls, central lubrication system, protection system for cabin (FOPS), armoured glass (cabin), fire suppression system, emergency release system for slew and crawler drive, overload protection system, lifting cables, different boom operation angles, camera system, exhalation particle filter, protection rails, shoring shield.



UNIDACHS 300S

Unidachs 300S

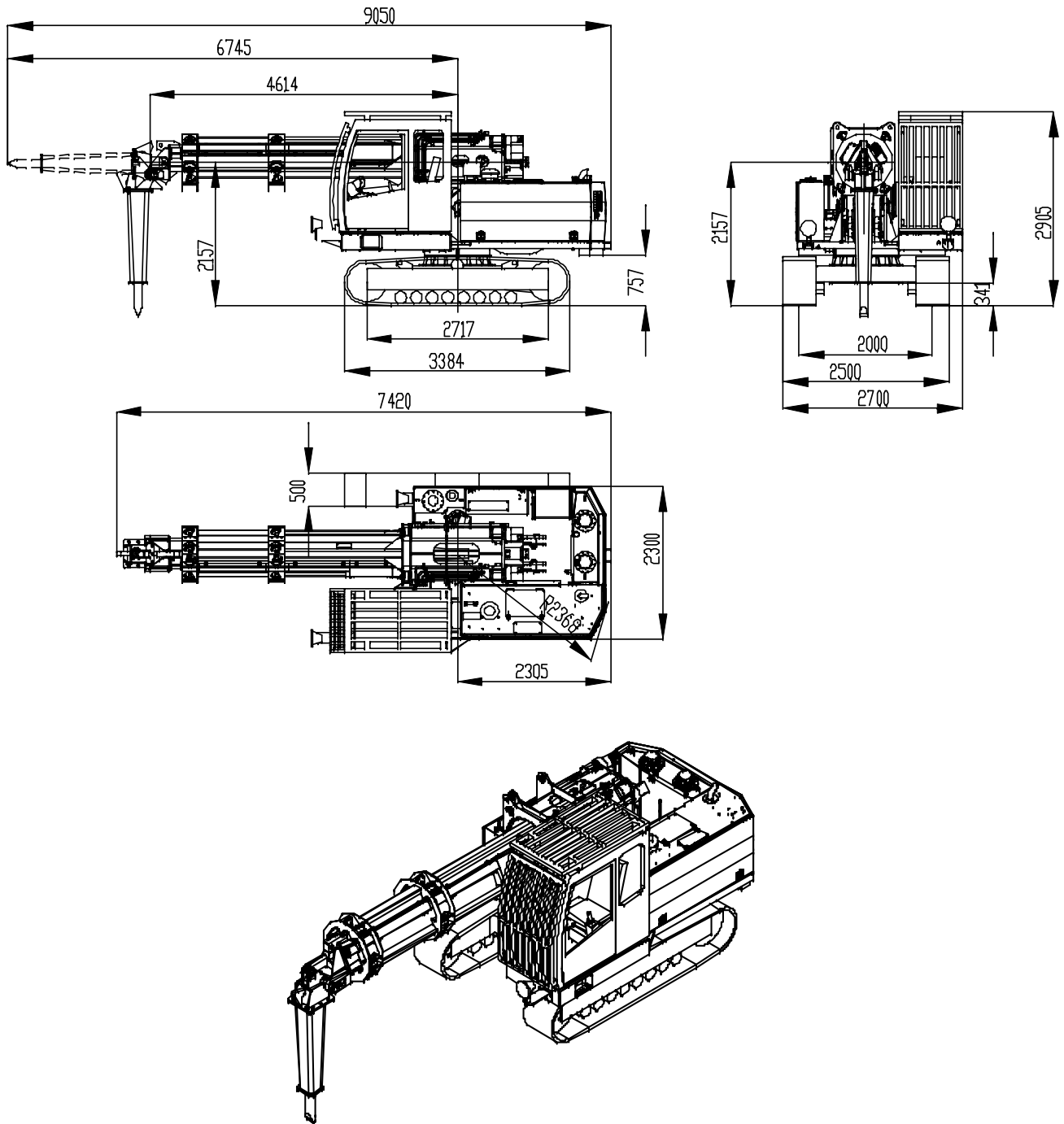


Reichweite mit 1m Verlängerung
Reach with 1m extension

Reichweite /
Reach [m]

Due to technical development, modifications are reserved without notice!





Due to technical development, modifications are reserved without notice!

